

**VuLife®****6" IC REMODEL HOUSING**

INCANDESCENT LAMPS

**V6ICR W**

Project: \_\_\_\_\_

Fixture Type: \_\_\_\_\_

Location: \_\_\_\_\_

Contact/Phone: \_\_\_\_\_

**PRODUCT DESCRIPTION**

IC Air-Loc® Remodel Housing with all 6" trims • Energy efficient, sealed housing

- Can be completely covered with insulation
- Includes (3) Air-Loc tape strips to cover remodel springs after installation
- IC Remodel Housing for remodel application where back side of ceiling is not accessible
- Installs through an opening in the ceiling from below
- Secured in place by factory installed remodel springs.

**PRODUCT SPECIFICATIONS**

**Lamp** Lamp ratings based on trim selected—see reverse.

**Socket** Medium base porcelain socket with nickel-plated copper screw shell • Adjustable socket plate and detachable socket with snap-in springs to accommodate various lamp and trim combinations • Shipped with socket cap to protect against paint overspray.

**Trims** Trim selection shown on reverse.

**Labels** UL/cUL listed for through-branch wiring, damp locations and IP

- Product thermally protected against improper use of lamps • UL/cUL Listed
- Trims V3040N and V3041 are wet location approved for covered ceiling applications
- Trim V3034 is wet location approved for covered ceiling applications, **when used with outdoor rated lamps.**

**Testing** All reports are based on published industry procedures; field performance may differ from laboratory performance.

**INSTALLATION**

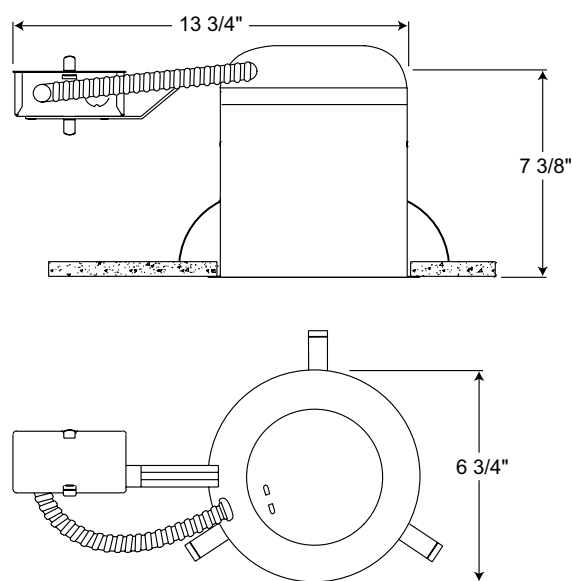
**Junction Box** Pre-wired junction box • Junction box provided with removable access plate, (5) ½" knockouts, (4) Non-metallic sheathed cable connectors and ground wire • Knockouts equipped with pryout slots • Push-in electrical connectors included.

**Housing** IC housing, .028" aluminum sealed for Air-Loc Compliance

- Remodel spring accommodate up to 1" ceiling thickness.

**Warranty** 1-year limited warranty. This is the only warranty provided and no other statements in this specification sheet create any warranty of any kind. All other express and implied warranties are disclaimed. Complete warranty terms located at: [www.acuitybrands.com/support/warranty/terms-and-conditions](http://www.acuitybrands.com/support/warranty/terms-and-conditions)

**Note:** Actual performance may differ as a result of end-user environment and application.  
Specifications subject to change without notice.

**DIMENSIONS**

6 1/4" CEILING CUTOUT

**PRODUCT CODES**






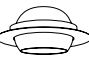



Catalog No.	Input Voltage	Lamp Rating (max.)
V6ICR W	120V	A19/PAR30/PAR30L/BR30/BR40/PAR38 (See reverse for max. trim rating)

# 6" IC REMODEL HOUSING

## INCANDESCENT LAMPS

### V6ICR W

#### TRIMS/LAMPS

	Cat. No.	Description	Max. Lamp Rating
	<b>V3024 WWH</b> <b>V3024 BWH</b>	Conical White Baffle Conical Black Baffle	50W PAR30, 75W PAR30L, 65W BR30
	<b>V3025 WWH</b> <b>V3025 BWH</b>	Straight White Baffle Straight Black Baffle	50W PAR30, 50W PAR30L, 75W PAR38
	<b>V3034 WWH◆◆</b> <b>V3034T WWH◆◆</b> <b>V3034T BWH◆◆</b>	Full White Baffle Full White Baffle with Torsion Springs Full Black Baffle with Torsion Springs	40W A19 (white only), 75W PAR30, 75W PAR30L, 90W PAR38 (white only)
	<b>V3027 CWH</b>	Clear Cone	50W PAR30, 75W PAR30L, 65W BR30
	<b>V3037T WWH◆◆</b>	Full White Cone with Torsion Springs	65W BR30, 75W BR40, 90W PAR38
	<b>V3029 WH</b>	White Eyeball	65W BR30, 75W PAR30L
	<b>V3040N PW◆</b>	Stippled Opal Lens Shower with Reflector	30W A19, 35W PAR30
	<b>V3041 PW◆</b>	Drop Opal Lens Shower with Reflector	40W A19
	<b>V3050 WH</b>	Open Frame	65W BR30

Trim Size: 7 $\frac{3}{4}$ " O.D. (except Cat. Nos. V3034 - 7 $\frac{5}{8}$ " O.D., Cat. Nos. V3040N, V3041, V3050 - 8" O.D.).

Trim Finish: PW - Plastic White (Polycarbonate material shower trim), WH - White.

Note: In Canada when insulation is present, Type IC fixtures must be used.

◆ UL/cUL Listed for use in wet location.

◆◆ UL/cUL Listed for use in wet location with outdoor rated lamp.

**Air-Loc** Vulite IC housings meet IECC Energy Code requirements per ASTM E283.  
Air-Loc® rated trims are pre-gasketed for minimum air leakage with IC housings.