

FEATURES & SPECIFICATIONS

INTENDED USE — The 6" Wafer-Thin LED recessed downlight with remote driver box combines high quality light output and efficiency while eliminating the housing for competitive affordability. This innovative wafer-slim Type IC design allows easy installation for new construction or remodel from below the ceiling without the requirement of a pot light housing. The LED module maintains at least 70% light output for 36,000 hours. These LED Wafer downlights are intended for closets, attics, hallways, bathrooms, kitchens, basements, soffits, entry ways, porches, garages, stairwells, corridors, nursing/retirement homes, condos, elevators, apartments, and any other small areas.

CONSTRUCTION — Ideal for shallow ceiling plenum since a pot light housing is NOT required. IC rated driver and fixture - approved for direct contact with insulation. Aluminum die cast outer frame. Durable, powder coat paint to prevent rust. Round fixture with integral edge-lit LED's. Steel spring clip for easy installation. Plenum rated cable connector to connect from module to remote driver box. Isolated driver integrated inside steel remote box with four 7/8" knockouts with slots for pryout. Suitable for pulling wires with the 12 cubic-inch wiring compartment to accommodate up to (6) 14 gauge insulated conductor, or (4) 12 gauge insulated conductors; making the Wafer LED Downlights much easier to wire in 2in/2out (plus ground) daisy-chain applications and contractor friendly.

PATENT PENDING.

INSTALLATION — Ideal for shallow ceiling plenum; no housing required. Steel spring clip for easy installation. 6" cut out template is provided to ensure a correct sized hole is cut into ceiling for proper installation of the trim. Size of hole should not exceed 6 1/4 inches for this product. Suitable for installation in t-grid and drop ceiling applications with the WF8643 Pan. 2" plenum space required for installation of the remote driver box.

OPTICS — Polycarbonate lens provides even illumination throughout the space.

ELECTRICAL — Connect directly to 120V power supply via provided UL recognized driver. High efficient driver with power factor > 0.9. Ambient operating temperature: -40°F (-40°C) to +104°F (+40°C). Dimming down to 10% (See page 2 for recommended dimmers). Replaces 75W incandescent for 865 lumens and 100W incandescent for 1020 lumens.

LISTINGS — CSA certified to US and Canadian safety standards. Wet location. Air Tight certified in accordance with ASTM E283-2004. NOM Certified.

WARRANTY — 5-year limited warranty. This is the only warranty provided and no other statements in this specification sheet create any warranty of any kind. All other express and implied warranties are disclaimed. Complete warranty terms located at:

www.acuitybrands.com/support/warranty/terms-and-conditions

Note: Actual performance may differ as a result of end-user environment and application. All values are design or typical values, measured under laboratory conditions at 25 °C. Specifications subject to change without notice.

Catalog Number
Notes
Type

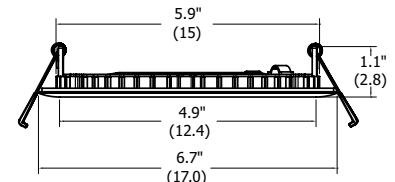
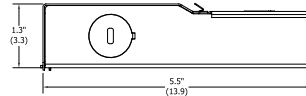
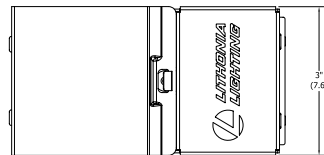
Wafer LED Recessed Downlight WF6 6" LED Module

IC/Non-IC
New Construction/Remodel



Specifications

Aperture:	4.9 (12.4)
Ceiling opening:	6 (15.2)
Overlap trim:	6.7 (17)
Height:	1.1 (2.8)



All dimensions are inches (centimeters) unless otherwise indicated.

ORDERING INFORMATION

Example: WF6 LED 30K MW

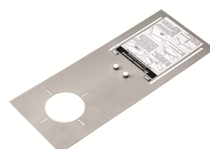
Series	Lamp	CCT/CRI/W/Lumens ¹	Finish
WF6 6" wafer-thin LED downlight	LED LED	30K 3000K/80CRI/13W/1020L	MW Matte white

Notes

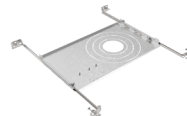
1 Total system delivered lumens.

Accessories: Order as separate catalog number.

WF8643 PAN R6	Universal new construction pan, retail pack of 6
WF8643 PAN U	Universal new construction pan, unit pack
WF6 PAN R12	6" new construction pan, retail pack of 12
WFJB U	Remodel Joist Bar
WFEXC6 U	6' 2 pin FT4 cable
WFEXC10 U	10' 2 pin FT4 cable
WFEXC20 U	20' 2 pin FT4 cable
WF6GR MW JZ	6" round oversized trim ring



WF6 PAN



WF8643 Pan



Remodel Joist Bar



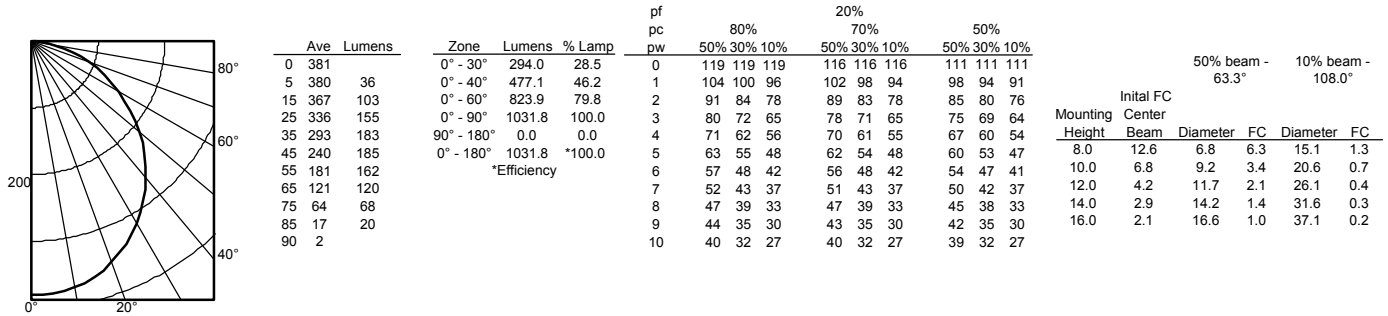
Extension Cable (2 pin)

WF6 6" LED Wafer Module

PHOTOMETRICS

Distribution Curve	Distribution Data	Output Data	Coefficient of Utilization	Illuminance Data at 30" Above Floor for a Single Luminaire
--------------------	-------------------	-------------	----------------------------	--

WF6 LED 30K, 3000 K LEDs, input watts: 13, delivered lumens: 1020, LM/W=78.5, test no. ISF 30024



ENERGY DATA & DIMMING CAPABILITY

6" LOW LUMEN ENERGY DATA	
Color Temperature	3000K
Lumens	800
CRI	80
Lumens/Watt	63.5
Min. starting temperature	-40°C (-40°F)
EMI/RFI	FCC Title 47 CFR, Part 15, Class B
Sound rating	Class A Standards
Input voltage	120V
Min. power factor	0.99
Input frequency	50/60 Hz
Rated wattage	12.6W
Input power	12.6W
Input current	0.11A

COMPATIBLE DIMMERS					
Leviton	Lutron			Sensorswitch	Synergy/Leviton
6633-PA	Maestro MACL-153M (TX)	Diva/Skylark DVRP-253PCTRP-253P	Panel Module HW/LP-RPM-4A-120	nSP5 PCD 2W	ISD 600 I 120/IP106
IPL06-LED/INC mode	Maestro Wireless MRF2-6ELV	Skylark CTCL-150	Panel Module HW/LP-RPM-4U-120	nSP5 PCD ELV 120	ISD 400 ELV 120/IPE04
6615-P	Gen 3.0 DVCL-153P (T9)	Caseta Wireless PD-5NE	Grafik QS/Wallbox LQRJ-WPM-6P		
	Maestro MSCL-OP153M	Maestro MACL-LFQ	Grafik Eye 3000 Family HWI-WPM-6D-120		
	Caseta Wireless PD-6WCL	RadioRA2 RRD-6NA	HomeWorksQS / my Room LQSE-4A1-D/ MQSE-4A1-D/MQSE-3A1/MQSE-2A1-D,120V		
	Grafik T GT-5NEM / GTJ-5NEM	HomeWorks HQRD-6NA	Homeworks QS LQSE-4A-120-D		

*Requires Lutron Smart Bridge L-BDG2-WH (sold separately)